

1 Block B3/C3-South
1:200

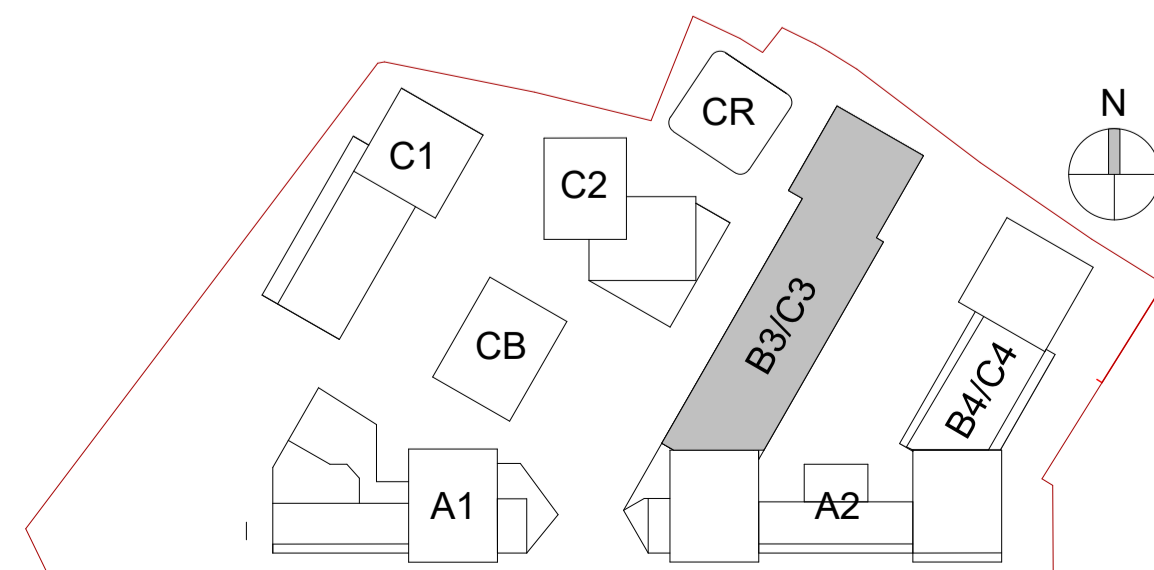


2 Block B3/C3-West
1:200

MATERIAL TAG

- 1- Brick Type A
- 2- Brick Type B
- 3- Brick Type C
- 4- Brick Type D
- 5- Selected Render
- 6- Selected Aluminium Window System with Spandrel Panel
- 7- Mild Steel Balustrade
- 8- Metal (Gold)
- 9- Metal (Red)
- 10- Recon Stone Concrete (Grey)
- 11- Precast Concrete (Red)
- 12- Concrete
- 13- Timber Louver
- 14- Steel
- 15- Polycarbonate Panel
- 16- Render Gold

Block B3C3 Elevations - South & West



Revision Description	Date	Rev. No.	Issued by
SHD Lodgment to ABP	01-12-20	1	JM



architecture | urban design **Dublin** **Cork**
 email: info@mahonypike.com The Chapel One South Mall
 tel: +353 1 202 7400 Mount St. Anne's Cork City
 fax: +353 1 283 0822 Milltown, Dublin 6 Co. Cork
 www.mahonypike.com D06 XNS2 Ireland T12 CCN3 Ireland

Project: Castleforbes SHD
Location: Castleforbes, Sheriff Street Upper, Dublin
Client: Glenveagh Living

Project Code: 1826
Project Lead: JM
Drawn By: SW
Job No.: 1826
Purpose: Planning
Scale @ A1: 1 : 200
Date: 01-12-20
Revision: 1
Status: 50

Figured dimensions only to be used. This drawing is copyright of O'Mahony Pike Architects Ltd. All information is shared as per approved use in accordance with ISO19650-2:2018, Table 5; Standard Codes for Suitability of Models and Documents and the BEP. If the 'Status' field is empty, this information has been shared at 50 - WIP.

